



Guide for choosing Methylcellulose based Media

GFC_Methyl_18v01

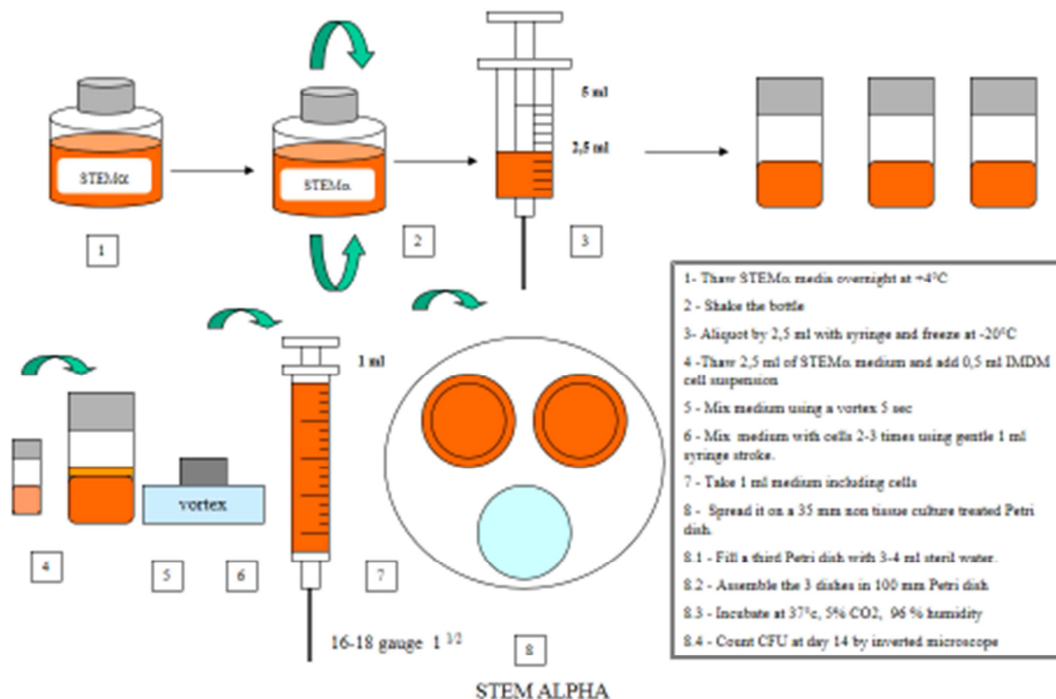
In compliance with EP 2.7.28 (Colony-forming cell assay for human haematopoietic progenitor cells)

In compliance with the MEDDEV 2.14/2 rev.1 February 2004, IVD GUIDANCE : **Research Use Only products**

Human Haematopoietic Stem and Progenitor Cells

Product name	Description	Type of Cells	Applications
STEM ALPHA.I (5110)	"Base" Medium	Fresh or cryoconserved Mononucleated Cells	Allows of cytokines
STEM ALPHA.IA (5111)	"Base" IL3, IL6, ScF, Epo and GMCSF	Fresh or cryoconserved Mononucleated Cells	CFU-E, BFU-E, CFU-GM, CFU-G, CFU-M, and CFU-GEMM
STEM ALPHA.ID (5112)	"Base" IL3, IL6, IL11, ScF, Epo, G-CSF and GMCSF	Fresh or cryoconserved CD34+ cells	CFU-E, BFU-E, CFU-GM, CFU-G, CFU-M, and CFU-GEMM
STEM ALPHA.IF (5113)	"Base" IL3, IL6, IL11, ScF, Epo, G-CSF, Flt3-lig and GMCSF	Fresh or cryoconserved Mononucleated Cells or CD34+ cells	CFU-E, BFU-E, CFU-GM, CFU-G, CFU-M, and CFU-GEMM
STEM ALPHA.IG (5114)	"Base" IL3, IL6, IL11, ScF, G-CSF, Flt3-lig and GMCSF	Fresh or cryoconserved Mononucleated Cells or CD34+ cells	CFU-GM, CFU-G, CFU-M
STEM ALPHA.IH (5119)	"Base" IL3, IL6, IL11, ScF, Epo, G-CSF, Flt3-lig and GMCSF (concentration equal to 5411)	Fresh or cryoconserved Mononucleated Cells or CD34+ cells	CFU-E, BFU-E, CFU-GM, CFU-G, CFU-M, and CFU-GEMM
STEM ALPHA.IV (5118)	"Base" IL3, IL6, IL11, ScF, G-CSF, Flt3-lig and GMCSF (concentration equal to 5412)	Fresh or cryoconserved Mononucleated Cells or CD34+ cells	CFU-GM, CFU-G, CFU-M

INSTRUCTIONS FOR USING STEM α METHYLCELLULOSE BASED MEDIA



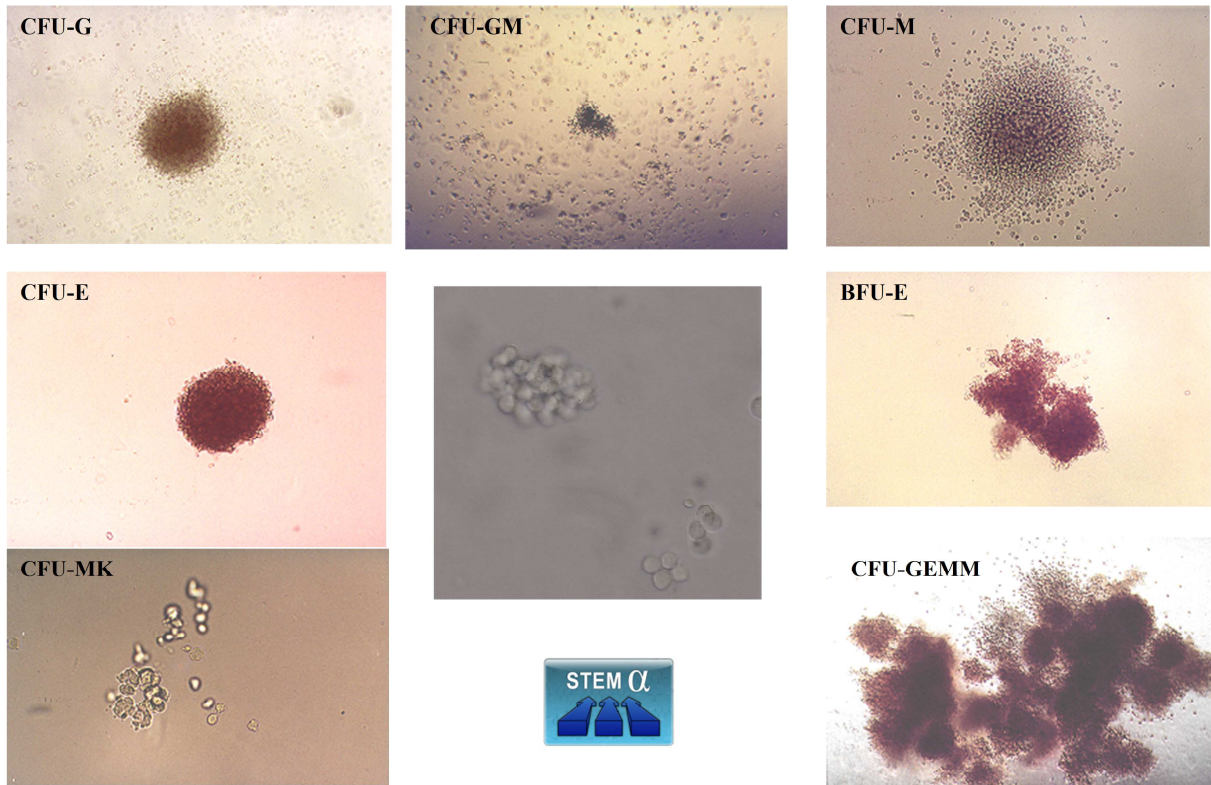
This document is the property of STEM ALPHA®, any reproduction, even partial, is prohibited.



Guide for choosing Methylcellulose based Media

GFC_Methyl_18v01

Identification of Human Haematopoietic Colony with Methylcellulose media



Human colony assay media can be also providing without phenol red.

Cryoconserved cells and Fresh cells can be stored in Animal Compound Free Media such as STEM ALPHA.S1 medium (w/o phenol red) for storage cells at 4°C for 48 hours and STEM ALPHA.CRYO3 for freezing and thawing cells.

STEM ALPHA offers complete line of services starting with Research product, medical device or Ancillary product (only in France) development, design and manufacturing to delivering finished product to our clients.

Quality Management System : ISO 9001.

Legal notes : The information provided is for personal use only. Unauthorized copying, manipulation and/or downloading of any of this information for other purposes is prohibited unless specifically permitted by STEM ALPHA. Clicking on certain links will take you onto other web sites, for which STEM ALPHA can take no responsibility.

This document is the property of STEM ALPHA®, any reproduction, even partial, is prohibited.

STEM ALPHA SA La Chenevatière RD389 - 69610 St Genis l'Argentière France
Phone 33 4 74 26 30 34 – Fax 33 4 74 70 63 68 – stetalpha@stetalphacom www.stetalpha.com